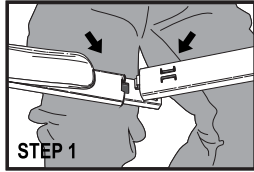


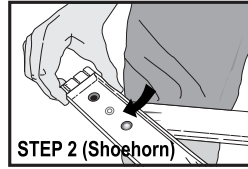
Assembly and use of the **easy to use** SHOEHORN / SOCK REMOVER



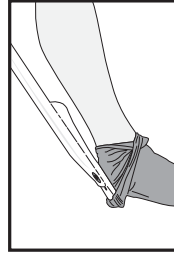
1. Insert the tab on the handle and into rectangular opening. Rest the area being assembled on your knee or solid surface. Swing both ends downward until you hear it "SNAP" together. The SHOEHORN / SOCK REMOVER can be broken down again and again to pack into small suitcase - (See step 5).



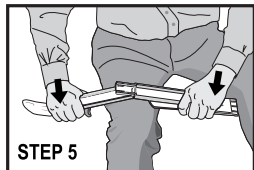
2. Press the button down, then rotate the desired tool into place to use either SHOEHORN OR SOCK REMOVER.



3. **Sock Remover:** To remove Socks and Hose, push button and rotate tool so the rubber gripper is at the end of the handle. Pull the top of the sock open near the back of your leg and insert the rubber gripper end between the sock and your leg at least 1" into the opening. Push downward with the handle. Continue pushing downward over the heel and until the sock is completely off your leg.



4. **Shoehorn:** To use the Shoehorn, push the button and rotate the tool so the Shoehorn is at the end of the handle. The Shoehorn can then be used to ease your foot into your shoes. Because of the extra-long handle, this can be done even while standing.

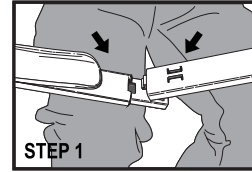


5. Place tool on your knee so it is upside-down and underside is facing up. Grasp the handle with both hands on opposite ends. With a sharp downward movement, strike the joining area on your knee. The halves will separate with a solid "SNAP". This does not damage the handle. It can be re-connected again and again - (See step 1).

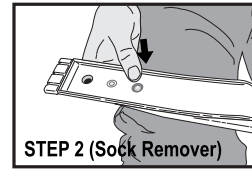
The SHOEHORN/SOCK REMOVER is made in the USA of durable ABS plastic and is built to last for many years.

To see a demonstration of the tool, go to [www.easytouseproducts.com](http://www.easytouseproducts.com) and look for the SHOEHORN demonstration video.

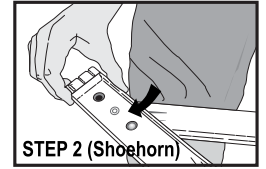
Assembly and use of the **easy to use** SHOEHORN / SOCK REMOVER



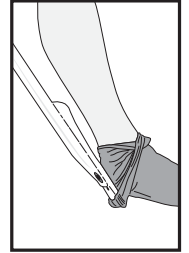
1. Insert the tab on the handle and into rectangular opening. Rest the area being assembled on your knee or solid surface. Swing both ends downward until you hear it "SNAP" together. The SHOEHORN / SOCK REMOVER can be broken down again and again to pack into small suitcase - (See step 5).



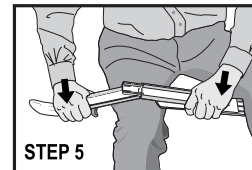
2. Press the button down, then rotate the desired tool into place to use either SHOEHORN OR SOCK REMOVER.



3. **Sock Remover:** To remove Socks and Hose, push button and rotate tool so the rubber gripper is at the end of the handle. Pull the top of the sock open near the back of your leg and insert the rubber gripper end between the sock and your leg at least 1" into the opening. Push downward with the handle. Continue pushing downward over the heel and until the sock is completely off your leg.



4. **Shoehorn:** To use the Shoehorn, push the button and rotate the tool so the Shoehorn is at the end of the handle. The Shoehorn can then be used to ease your foot into your shoes. Because of the extra-long handle, this can be done even while standing.



5. Place tool on your knee so it is upside-down and underside is facing up. Grasp the handle with both hands on opposite ends. With a sharp downward movement, strike the joining area on your knee. The halves will separate with a solid "SNAP". This does not damage the handle. It can be re-connected again and again - (See step 1).

The SHOEHORN/SOCK REMOVER is made in the USA of durable ABS plastic and is built to last for many years.

To see a demonstration of the tool, go to [www.easytouseproducts.com](http://www.easytouseproducts.com) and look for the SHOEHORN demonstration video.